

## The Solution for Flexo Plate Quality Control



### Accurate printing starts with accurate plates.

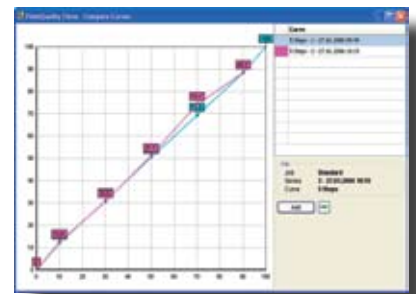
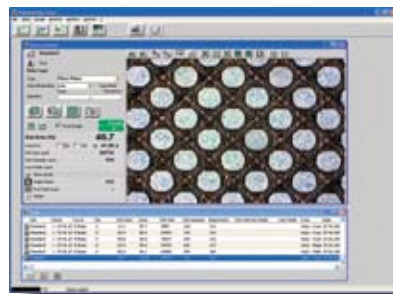
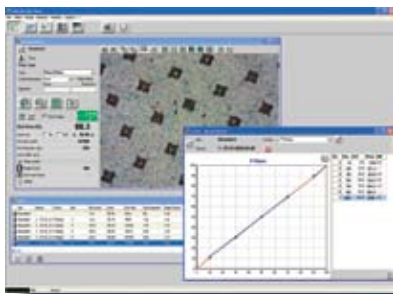
When it comes to flexo print production, vipFLEX2 is the one solution capable of handling all of your plate production quality assurance needs. This complete solution includes the vipFLEX2 desktop flexo plate reader for transparent flexo plates, PlateQuality Flexo software for analyzing and storing plate quality information, and the vipFLEX2 Target to quickly and easily verify the accuracy of your flexo plate reader. With vipFLEX2, you'll no longer have to worry about stopping the press due to plate quality. The result – you'll save on substrate consumables, ink and time while improving quality.

### Sophisticated Image Recognition

With its high resolution camera and sophisticated image recognition, vipFLEX2 can measure all types of transparent flexo plates. vipFLEX2 evaluates all of the important parameters, including dot area, dot size, screen ruling, edge factor, mottling, and visual analysis, and supports both AM and FM screening, as well as Samba (hybrid screening). In addition, vipFLEX2 can be used to measure paper, film and aluminum plates.

### PlateQuality Flexo Software

The included PlateQuality Flexo software puts all the information you need to analyze plate quality and document your quality process at your fingertips. The software automatically store measurement values, plate images and plate characteristic curves, as well as job data (including plate type, chemistry data, screening, and more), customer data and reference values. This information can be printed in a variety of formats, easily retrieved from the database at any time or exported to another program for more in-depth analysis. With PlateQuality Flexo Software, you'll have everything you need to document quality and meet ISO standards – all in a single place.





## SPECIFICATIONS

<b>Functions</b>	<ul style="list-style-type: none"> <li>Dot area (%) •</li> <li>Dot size (dot diameter) •</li> <li>Screen ruling (lines/cm or lines/inch) •</li> <li>Line Width •</li> <li>Edge factor •</li> <li>Dot void factor •</li> <li>Mottle •</li> <li>Visual analysis •</li> <li>Digital zoom (2x) •</li> <li>Characteristic curve •</li> </ul>																				
<b>Measurement Samples</b>	<ul style="list-style-type: none"> <li>Flexo plates •</li> <li>Masked plates •</li> <li>Offset plates (positive and negative) •</li> <li>Paper •</li> <li>Film (positive and negative) •</li> <li>Plastic foils •</li> <li>AM screening •</li> <li>FM, Samba and Hybrid screening (highlights and shadows only) •</li> </ul>																				
<b>Measurement Technology</b>	<table border="0"> <tr> <td>Sensor</td> <td>RGB Camera</td> </tr> <tr> <td>Resolution Sensor</td> <td>1280 x 1024 SXVGA</td> </tr> <tr> <td>Target size</td> <td>14'000 ppi</td> </tr> <tr> <td></td> <td>Approx. 2.3 x 1.9 mm</td> </tr> <tr> <td></td> <td>(0.090 x 0.075 inch)</td> </tr> <tr> <td>Illumination</td> <td>RGB (Auto Selection)</td> </tr> <tr> <td>Screen Ruling Range (AM)</td> <td>32 - 60 l/cm</td> </tr> <tr> <td></td> <td>80 - 150 lpi</td> </tr> <tr> <td>Repeatability</td> <td>+/- 0.5%</td> </tr> <tr> <td>Measurement Time</td> <td>&lt; 1 sec.</td> </tr> </table>	Sensor	RGB Camera	Resolution Sensor	1280 x 1024 SXVGA	Target size	14'000 ppi		Approx. 2.3 x 1.9 mm		(0.090 x 0.075 inch)	Illumination	RGB (Auto Selection)	Screen Ruling Range (AM)	32 - 60 l/cm		80 - 150 lpi	Repeatability	+/- 0.5%	Measurement Time	< 1 sec.
Sensor	RGB Camera																				
Resolution Sensor	1280 x 1024 SXVGA																				
Target size	14'000 ppi																				
	Approx. 2.3 x 1.9 mm																				
	(0.090 x 0.075 inch)																				
Illumination	RGB (Auto Selection)																				
Screen Ruling Range (AM)	32 - 60 l/cm																				
	80 - 150 lpi																				
Repeatability	+/- 0.5%																				
Measurement Time	< 1 sec.																				
<b>Interface</b>	USB 2.0																				
<b>Power Supply</b>	Powered by USB. No additional charger or battery required. USB 2.0 high power device																				
<b>Mechanical Data</b>	<table border="0"> <tr> <td>Dimensions (height x width x length)</td> <td>16.5 x 32 x 52 cm</td> </tr> <tr> <td></td> <td>(6.5 x 12.6 x 20.5 in)</td> </tr> <tr> <td>Weight</td> <td>8.5 kg (18.7 lb)</td> </tr> </table>	Dimensions (height x width x length)	16.5 x 32 x 52 cm		(6.5 x 12.6 x 20.5 in)	Weight	8.5 kg (18.7 lb)														
Dimensions (height x width x length)	16.5 x 32 x 52 cm																				
	(6.5 x 12.6 x 20.5 in)																				
Weight	8.5 kg (18.7 lb)																				
<b>System Requirements</b>	<table border="0"> <tr> <td>Operating system</td> <td>Windows 2000 or XP</td> </tr> <tr> <td>Screen resolution</td> <td>1024 x 768, 24bit color</td> </tr> <tr> <td>Data interface</td> <td>2 USB 2.0 ports</td> </tr> <tr> <td></td> <td>(device and dongle)</td> </tr> </table>	Operating system	Windows 2000 or XP	Screen resolution	1024 x 768, 24bit color	Data interface	2 USB 2.0 ports		(device and dongle)												
Operating system	Windows 2000 or XP																				
Screen resolution	1024 x 768, 24bit color																				
Data interface	2 USB 2.0 ports																				
	(device and dongle)																				

### Training & Education from X-Rite

Do you need help to ensure your team gets the most out of the instruments in your workflow? Whether you prefer to learn in a classroom, online or at your own facility, Color Experts from X-Rite can help. Are you interested in obtaining ISO print standards certification? An X-Rite G7- or PSO-Certified Trainer can come to your facility to work with your staff hands-on to set up, train and qualify your team. For more information, please visit [xrite.com](http://xrite.com).